

# Lung Cancer

## What is Lung Cancer?

Lung cancer is a form of cancer that starts in the lungs. Those that smoke, been exposed to excessive amounts of second hand smoke, and those that come from a family with lung cancer history are at risk of lung cancer.

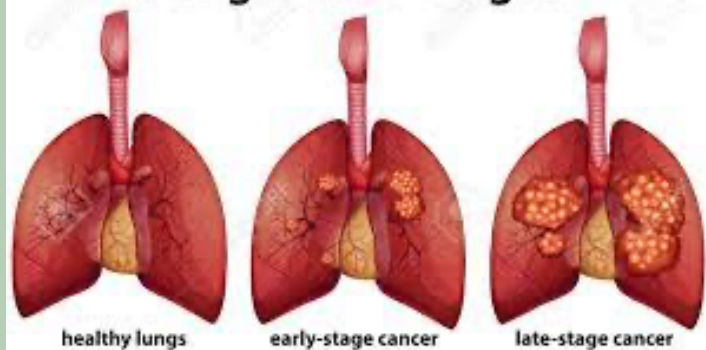
## Symptoms

Smokers and previous smokers should be seen by physicians as they are at a higher risk as only 15% are diagnosed early. If you have experienced coughing, shortness of breath, fatigue, wheezing, coughing up blood or general pain please see a physician as soon as possible.

## Stats

- Lung cancer leads the cause of death in cancer patients in the US
- Over 50% of lung cancer is diagnosed in the late stages.
- 40% of new lung cancer cases come from current smokers and 50% come from former smokers.

## Lung Cancer Stages



## What is the lung Cancer Alliance?

They are a non-profit organization that help those living with lung cancer. They aim to help improve lung cancer research, and educate public policy leaders.

## Alliance Programs

For more information about lung cancer alliance programs visit:

- Lung Cancer Hotline
- Phone Buddy Program
- Lungcanceralliance.org
- Clinical Trials Matching Service
- Spirit and Breath
- No More excuses. No More Lung Cancer.

## Facing lung cancer together

Those with Lung cancer are not alone as there are multiple programs to discuss treatment options.





## What is X disease?

Add a little bit of body text

## Stats

Add a little bit of body text  
text

# Title

## Si/Sx

Add a little bit of body text

For more information, visit  
[www.shifaclinic.org](http://www.shifaclinic.org)  
Contact us: (916) 441-6008  
419 V. St, Sacramento, CA





## Subheading

Add a little bit of body text

## Subheading

Add a little bit of body text

## Subheading

Add a little bit of body text





## What is X disease?

Add a little bit of body text

## Stats

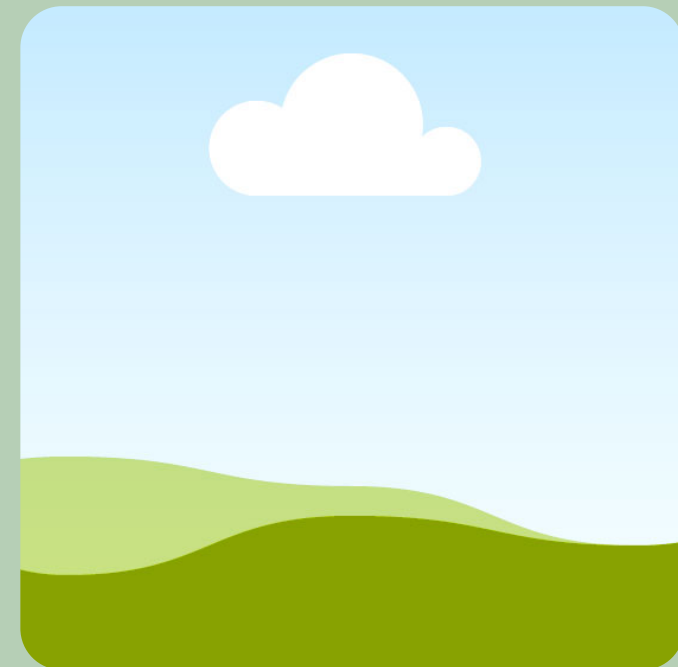
Add a little bit of body text  
text

# Title

## Si/Sx

Add a little bit of body text

For more information, visit  
[www.shifaclinic.org](http://www.shifaclinic.org)  
Contact us: (916) 441-6008  
419 V. St, Sacramento, CA





## Subheading

Add a little bit of body text

## Subheading

Add a little bit of body text

## Subheading

Add a little bit of body text





## What is X disease?

Add a little bit of body text

## Stats

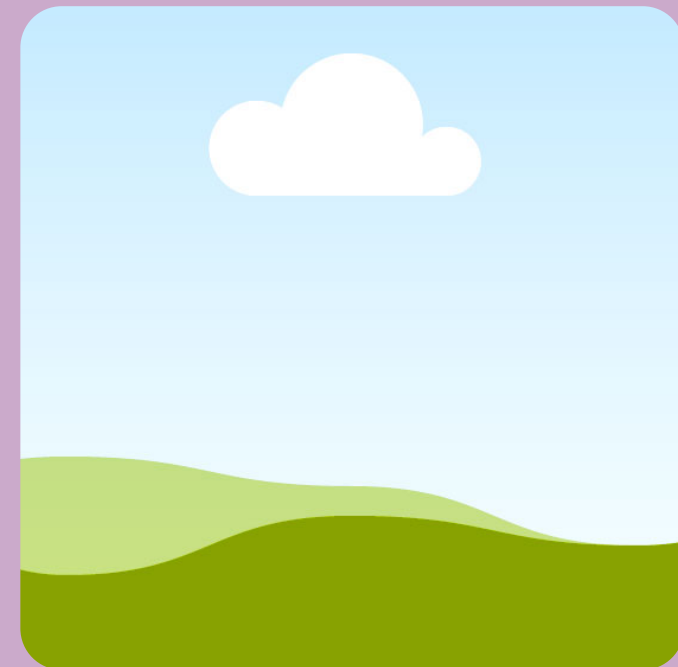
Add a little bit of body text  
text

# Title

## Si/Sx

Add a little bit of body text

For more information, visit  
[www.shifaclinic.org](http://www.shifaclinic.org)  
Contact us: (916) 441-6008  
419 V. St, Sacramento, CA





## Subheading

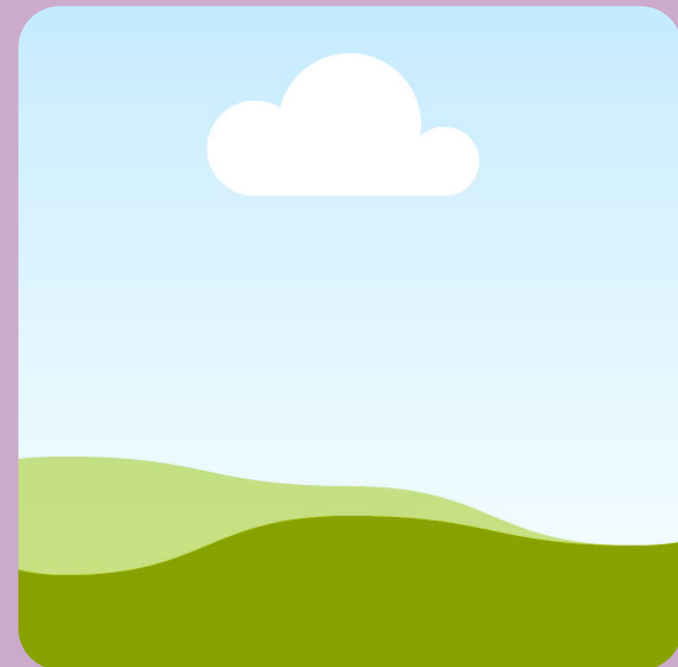
Add a little bit of body text

## Subheading

Add a little bit of body text

## Subheading

Add a little bit of body text







## What is X disease?

Add a little bit of body text

## Stats

Add a little bit of body text  
text

# Title

## Si/Sx

Add a little bit of body text

For more information, visit  
[www.shifaclinic.org](http://www.shifaclinic.org)  
Contact us: (916) 441-6008  
419 V. St, Sacramento, CA





## Subheading

Add a little bit of body text

## Subheading

Add a little bit of body text

## Subheading

Add a little bit of body text





## What is X disease?

Add a little bit of body text

## Stats

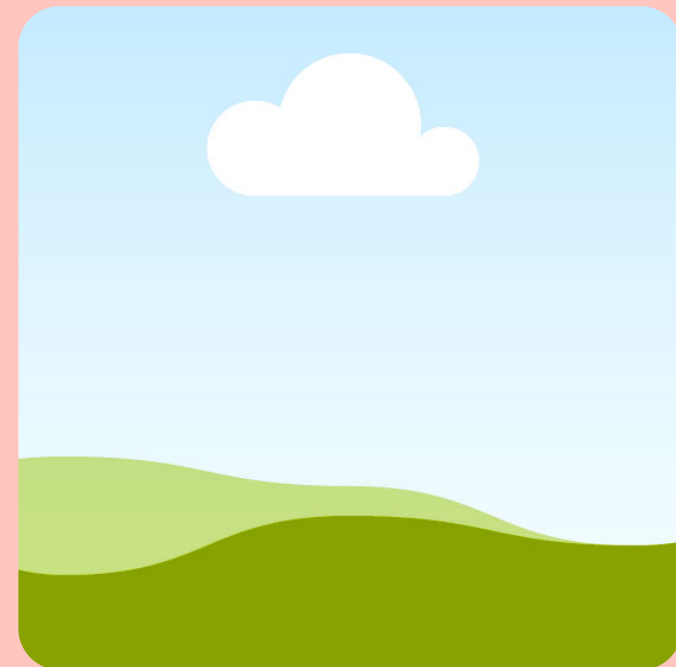
Add a little bit of body text  
text

# Title

## Si/Sx

Add a little bit of body text

For more information, visit  
[www.shifaclinic.org](http://www.shifaclinic.org)  
Contact us: (916) 441-6008  
419 V. St, Sacramento, CA





## Subheading

Add a little bit of body text

## Subheading

Add a little bit of body text

## Subheading

Add a little bit of body text

